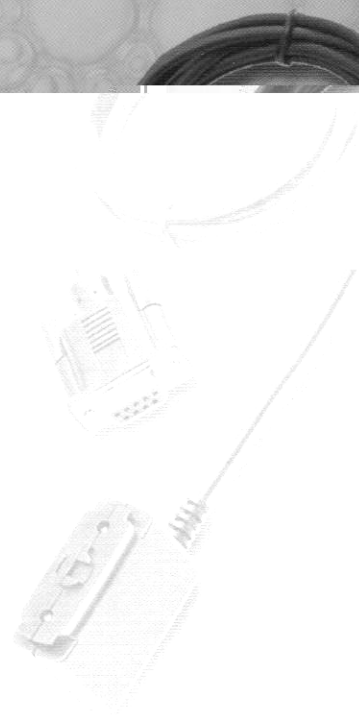
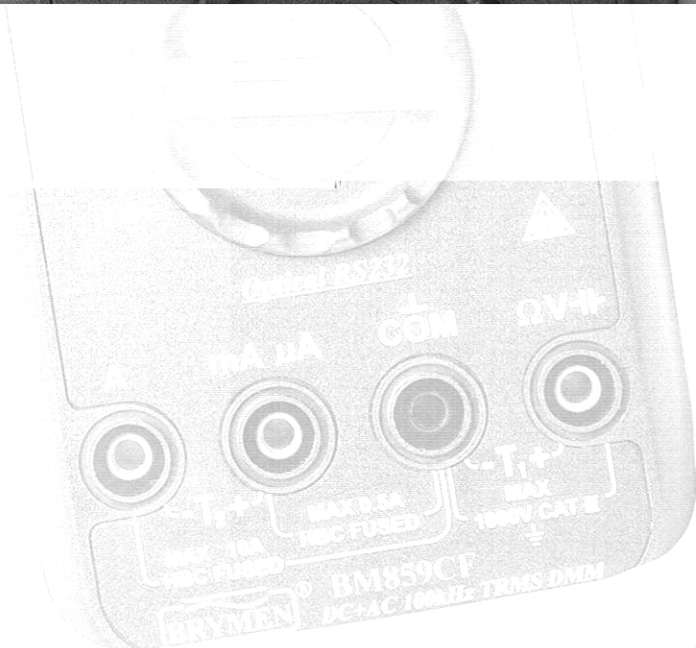
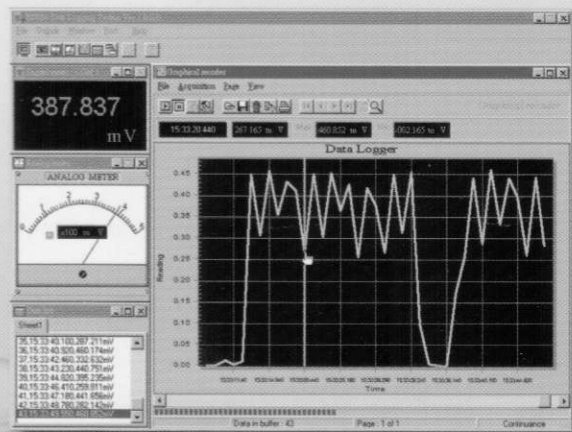


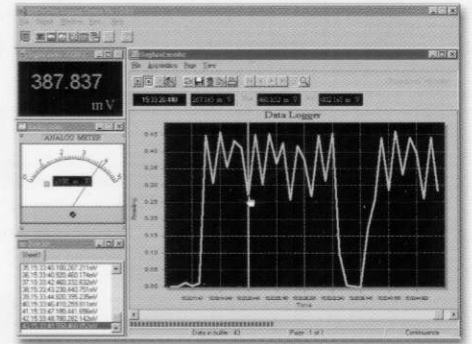
A New 5-4/5 Digits Hand-Held Flag-Ship For Those Who Only Accept The Best !



BM859CF
Professional DMM

BM859CF

BM857



BC85X



BM859CF	BM857	FUNCTIONS & FEATURES
●	●	5-4/5 DIGITS 500,000 COUNTS FOR DC VOLTAGE STABLE MODE
●	●	6 DIGITS 999,999 COUNTS MODE FOR Hz WITH 0.002% ACCURACY
0.02%	0.03%	HIGH BASIC DCV ACCURACY, FAST MEASUREMENT 5/SEC
100kHz	20kHz	HIGH BANDWIDTH AC / AC+DC TRUE RMS VOLTAGE FUNCTIONS
1000V	600V	HIGH GENERAL (OHM, CAPACITANCE ... e.g.) INPUT PROTECTION
1000V	500V	HIGH ENERGY HBC FUSE (IR 10kA) PROTECTED ON 20A CURRENT INPUT
●		T1-T2 DUAL CHANNELS K-TYPE TEMPERATURE -50°C TO 1000°C
●	●	OPTICALLY ISOLATED RS232 PC INTERFACE CAPABILITY
●	●	SOFTWARE FOR WIN 95/98™ (OPTIONAL PURCHASE)
●	●	AUTO-RANGING RECORD MAX, MIN, MAX-MIN READINGS
●	●	CREST (PEAK HOLD) MAX, MIN, MAX-MIN READINGS
●	●	DATA HOLD, RELATIVE ZERO MODE, INTELLIGENT AUTO POWER OFF
●	●	HIGH SPEED ANALOG BAR-GRAPH UPDATES 60/SEC
●	●	AUDIBLE & VISIBLE WARNING AGAINST IMPROPER PLUG IN
●	●	DCV 0.001mV TO 1000V, ACV 0.01mV TO 1000V
●	●	DCA 0.01µA TO 20A, ACA 0.01µA TO 20A
●	●	OHM 0.01Ω TO 50MΩ, CAPACITANCE 10pF TO 9999µF
●	●	LINE LEVEL FREQUENCY WITH 4 SELECTABLE TRIGGER LEVELS
●	●	DIGITAL LOGIC LEVEL FREQUENCY 5Hz TO 2MHz
●	●	DUTY CYCLE % READING, DIODE TEST
●	●	%4-20mA PROCESS CONTROL LOOP CURRENT READING
●	●	dBm READING WITH 20 SELECTABLE IMPEDANCE VALUES
●	●	HIGH SPEED AUTO-RANGING, FAST AUDIBLE CONTINUITY < 100µs
●	●	BACK-LIGHTED LARGE EASY TO READ LCD DISPLAY
●	●	FIRE RETARDED CASE, SPLASH PROOF CONSTRUCTION
●	●	REPLACEABLE AND WASHABLE PROTECTIVE HOLSTER
●	●	TRANSIENT PROTECTION UP TO 8kV 1.2/50µs LIGHTNING SURGE
●	●	LVD (SAFETY) MEETS EN61010-1(1995) CAT III 1kVAC/DC
●	●	EMC MEETS EN55022/A1 CLASS B, EN50082-1, IEC801-2, & IEC801-3

Times 10 In Accuracy: 0.03% Vs 0.3%

Times 100 In Resolution: 500,000 counts Vs 4,000 counts

Higher Safety Category: Cat III 1kV Vs Cat II 1kV

New ASIC Technology: \$(BM857) < \$(xx79)

+ACV 100kHz Bandwidth at 4%: BM859CF

FULLY AUTORANGING

SHORTENS THE TIME TO MEASURE AND INCREASES THE EASE OF USE

CREST (PEAK HOLD)

CAPTURES INSTANTANEOUS PEAK READINGS AS SHORT AS 0.8ms IN DURATION

MAX-MIN RECORD

RECORD MAX, MIN, MAX-MIN READINGS, AUTORANGING

BACKLIGHTED LCD DISPLAY

FOR EASY VIEWING IN THE DARK

LAST SET FUNCTION DEFAULT

LAST SET FUNCTION WILL BE SAVED AS POWER-UP DEFAULT FOR EASE OF USE

RANGE

AUTORANGING WITH MANUAL-RANGING OVERRIDE

T1-T2 TEMPERATURE

2 CHANNELS K-TYPE TEMPERATURE, SELECTABLE °C OR °F MEASUREMENTS

DIGITAL SIGNAL Hz

FOR LOGIC LEVEL SIGNAL HIGH FREQUENCY MEASUREMENTS

dBm FUNCTION

WITH 20 SELECTABLE IMPEDANCE VALUES

1kV AC VOLTAGE MEASUREMENT

IMPROVED MEASURING CAPABILITIES

INPUT WARNING

AUDIBLE AND VISIBLE WARNING AGAINST IMPROPER PLUG IN

FIRE RETARDED CASE

FOR REINFORCED SAFETY

HBC FUSE PROTECTED

10kA HIGH BREAKING CAPACITY 1000V (500V FOR BM857) CERAMIC FUSE PROTECTED

SPLASH PROOF CONSTRUCTION

FOR HARSH ENVIRONMENT

PROTECTIVE HOLSTER

INCREASES PRODUCT DURABILITY. REPLACEABLE & WASHABLE

RS232 PC INTERFACE CAPABILITY

OPTICALLY ISOLATED CABLE WITH DATA RECORDING SYSTEM SOFTWARE FOR WIN 95/98 (OPTIONAL PURCHASE)

0.02% HIGH BASIC ACCURACY WITH LARGE EASY TO READ DISPLAY

INTELLIGENT AUTO POWER OFF TO EXTEND BATTERY LIFE

FAST MEASUREMENTS

DATA 5 TIMES / SEC
BAR-GRAPH 60 TIMES / SEC

RELATIVE ZERO MODE

FOR CONVENIENT READINGS COMPARISON & OFFSET

HIGH RESOLUTION MODE

999,999 COUNTS IN Hz
500,000 COUNTS IN DCV

HIGH VOLTAGE Hz

INNOVATIVE CIRCUITRY FOR VARIABLE FREQUENCY DRIVE AND NOISY ELECTRICAL SIGNALS

DATA HOLD

FREEZES THE DISPLAYING READING FOR LATER VIEW

%4-20mA LOOP CURRENT

FOR PROCESS CONTROL

DIODE TEST

FOR TESTING DIODES AND RECTIFIERS

CAPACITANCE

AUTO-RANGING UP TO 9999µF WITH 1000V (600V FOR BM857) PROTECTION

AUDIBLE CONTINUITY

FOR QUICK OPEN-SHORT TESTS ON SWITCHES, FUSES, AND WIRES

EMC

MEETS EN55022/A1 CLASS B, EN50082-1, IEC801-2, IEC801-3

TRANSIENT PROTECTION

UP TO 8kV 1.2/50µs LIGHTNING SURGE, MORE CONFIDENCE FOR SERIOUS USERS

LVD

MEETS EN61010-1 CAT III 1kV

DC+AC TRUE RMS

100kHz VOLTAGE BANDWIDTH TO MEASURES SIGNAL TRUE VALUE REGARDLESS OF WAVEFORMS (20kHz FOR BM857)



BM859CF, BM857 GENERAL SPECIFICATIONS

Display: 4-4/5 digits 50,000 counts. Selectable stable mode 5-4/5 digits 500,000 counts for DC Voltage, & 6 digits 999,999 counts for Hz

Polarity: Automatic

Update Rate:

4-4/5 digits fast mode: 5 per second nominal;

5-4/5 digits stable mode: 1.25 per second nominal;

42 Segments Bar graph: 60 per second max

Low Battery: Below approx. 7V

Operating Temperature: 0°C to 45°C

Relative Humidity: Maximum relative humidity 80% for temperature up to 31°C decreasing linearly to 50% relative humidity at 45°C

Pollution degree: 2

Storage Temperature: -20°C to 60°C, < 80% R.H. (with battery removed)

Altitude: Operating below 2000m

Temperature Coefficient: nominal 0.1 x (specified accuracy) / °C @ (0°C -- 18°C or 28°C -- 40°C), or otherwise specified

Sensing: AC, AC+DC True RMS

Power Supply: Single Alkaline 9V battery; NEDA1604A, JIS6AM6 or IEC6LF22

Power Consumption: 5 mA typical

APO Timing: Idle for 4.5 minutes

APO Consumption: 20µA

Dimension: L186mm x W87mm x H35.5mm;

L198mm x W97mm x H55mm with holster

Weight: 390 gm; 500 gm with holster

Safety: The meters meet the requirements for double insulation to IEC61010-1(1995), EN61010-1(1995),

UL3111-1(6.1994), CSA C22.2 NO. 1010-1-92

Installation Category III 1000 Volts ac and dc
E.M.C.: Meets EN55022(1994/A1; 1995/Class B) and EN50082-1(1992)

Overload Protections:

µA & mA : 0.63A/500V, IR 100kA, F fuse for BM857;

1A/600V, IR 100kA, F fuse for BM859CF

A : 12.5A/500V, IR 10kA, F fuse for BM857;

15A/1kV, IR 10kA, F fuse for BM859CF

V : 1050Vrms, 1450Vpeak

mV, Ω & Others : 600VDC/VAC rms for BM857; 1050Vrms, 1450Vpeak for BM859CF

Transient protection: 8kV (1.2/50µs surge)

Standard Accessories: Test leads (pair), holster, battery installed, user's manual, Bkp60 banana plug K-type thermocouple x 1 (BM859 only)

Optional Accessories: BR85X PC interface kit (BC85X RS232 optical adapter cable + BS85X RS232 software floppies), Bkb32 banana pins to K-type socket plug adapter

Special Features: Record MAX, MIN, MAX-MIN readings. Crest (Instantaneous Peak hold) MAX, MIN, MAX-MIN readings. Relative zero mode. 500,000 counts high resolution stable reading mode. Backlighted display dBm readings. T1-T2 differential temperature readings (BM859CF only). %4-20mA loop current readings. High noise rejection filtered Line Level Frequency mode. Data Hold. Audible & Visible input warning.

ELECTRICAL SPECIFICATIONS

Accuracy is ±(% reading digits + number of digits) or otherwise specified, at 23°C ± 5°C & less than 75% relative humidity.

True RMS voltage & current accuracies are specified from 5 % to 100 % of range or otherwise specified.

Maximum Crest Factor < 5:1 at full scale & < 10:1 at half scale, and with frequency components within the specified frequency bandwidth for non-sinusoidal waveforms.

DC Voltage

RANGE	BM859CF	BM857
	Accuracy	

AC & AC+DC Voltage

RANGE	BM859CF	BM857
	Accuracy*	

AC & AC+DC Current

RANGE	BM859CF	BM857	Burden Voltage